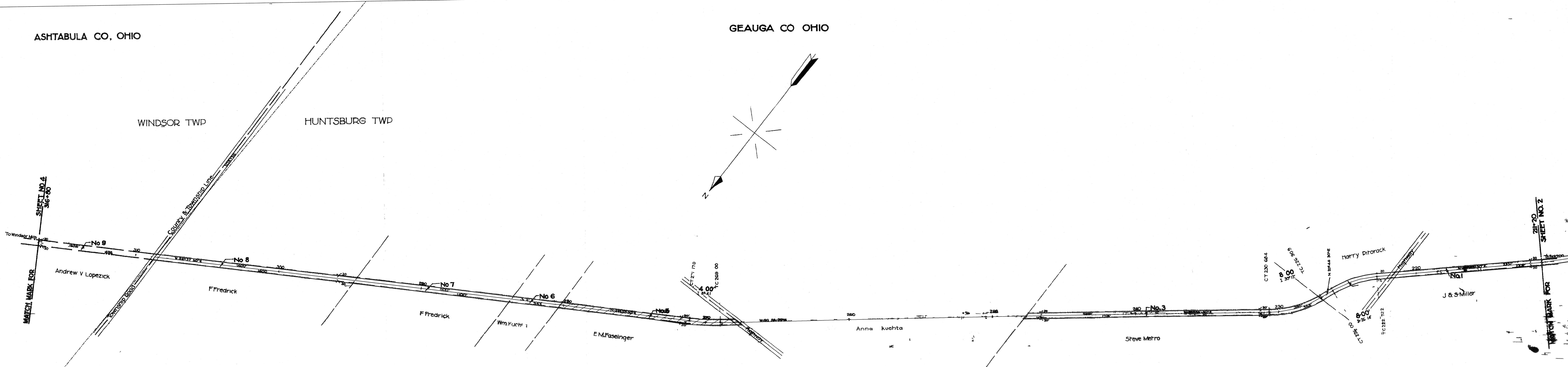


ASHTABULA CO, OHIO

GEAUGA CO OHIO

WINDSOR TWP

HUNTSBURG TWP



NEW-UNITED SCHEDULE

No	PA	CE	DIAS	NO	K	NO OF	INSTR	M	HT	DA	OF	INSTR	M	H	114-5 - Map No 3		REMARKS
															RECORDED	AREA	
1	314																Same as Parcel No 4, Map No. 2
2	314	Mar	Dead	July 3	Edward	Hayer	1890	1000	sq. ft. occupied by Highway								Ret. by Sec 2 of No 314 Sale Schedule
3	314	Mar	Dead	July 3	Samuel B	Strong	1890	277	sq. ft. occupied by Highway								Ret. by Sec 2 of No 314 Sale Schedule
4	314	Mar	Dead	July 3	James	Strong	1890	228	sq. ft. occupied by Highway								Retired 9 10 32 AFE 19297
5	314	Mar	Dead	Aug 9	Edward D	Clark	1890	229	sq. ft. occupied by Highway								
6	314	Mar	Dead	July 2	Will	Strickland	1890	231	sq. ft. occupied by Highway								
7	314	Mar	Dead	July 2	Myron	Moffatt	1890	232	sq. ft. occupied by Highway								
8	314	Mar	Dead	July 2	James	Price	1890	233	sq. ft. occupied by Highway								
9	314	Mar	Dead	Aug 9	Allen L	Parker	1890	234	sq. ft. occupied by Highway								Same as Parcel No 1 Map No 4

SCHEDULE FOR LAND SALES ETC

PA	CE	DIAS	NO	K	NO OF	INSTR	M	HT	DA	OF	INSTR	M	H	RECORDED		AREA	REMARKS
														B	P		
314	Q	C	D						Sep 19							184	See pa ce No 4 G a l to fe ce AFE
314	W								July 23							035	See pa ce No 2 G a fee E 39248

RIGHT OF WAY AND TRACK

THE BALTIMORE AND OHIO RAILROAD COMPANY
 OPERATED BY
 THE BALTIMORE AND OHIO RAILROAD COMPANY
 AKRON CHICAGO DIVISION WINDSOR BRANCH
 STATION 211-20 TO STATION 316+80
 SCALE 1 IN = 100 FT JUNE 30 1918
 OFFICE OF VALUATION ENGINEER
 BALTIMORE MD

NOTICE: While some utility occupations may be noted on this Valuation Section Map because of the lapse of time from original construction, the possible interim relocation of tracks, and reliance on third party documents furnished to CSXT, persons utilizing these Maps are ADVISED that neither CSXT nor CSXPI warrant, represent or guarantee that (1) all utility occupations are shown thereon, (2) the utilities shown thereon are in fact located as shown, Parties utilizing said Maps are FURTHER advised to make independent inquiry of (a) the utilities identified (b) other utilities having facilities or operations in the general or immediate vicinity as to such locations, AND to make physical inspection and/or survey of the subject areas.

THIS MAP WAS PLOTTED
 DATE: 7/24/03
 TIME: 4pm
 NOTE: MAPS OLDER THAN 6 MONTHS SHOULD BE DESTROYED

23.1 X 55.4

